



**TRM ASTURMADI RENEERGY Tracker** is an independent row system which allow permit to the central axis between rows, contributing to the maximum adaptability of the system to irregular local topography and on steep slopes without ground movement.

### DESIGN



- ✓ ASTURMADI RENEERGY technical team has more than 10 years of experience in photovoltaic sector and more than 1,2 GW of projects executed.
- ✓ Participation in projects in more than 20 countries.

### MANUFACTURING



- ✓ Cold formed profiles are manufactured according to UNE-EN 10162.
- ✓ Different steel qualities are selected, depending on the requirements of the project.
- ✓ Coating treatment is applied to guarantee the structure durability (HDG, Posmac, Magnelis, Magicinc or similar).

### ASSEMBLY



- ✓ This tracker system can be adapted to different possible foundations (Driven Pillars, Concrete Foundation, etc)
- ✓ Easy assembly process.
- ✓ All joints are bolted, neither cuts nor welds are needed in construction.

### MAINTENANCE



- ✓ Minimum maintenance.
- ✓ Easy accessibility to all installed solar modules.
- ✓ As there are no gaps between solar modules, the cleaning process can be robotized.

### QUALITY



- ✓ Metal structure manufactured according to European Standard UNE-EN 1090.
- ✓ Hot Dip Galvanized structure according to UNE-EN ISO 1461 and / or ZM coating treatment (Zinc-Magnesium) according to UNE-EN 10346.
- ✓ ATA Technical Due Diligence.

### WARRANTY



- ✓ Structure: 10 years (expandable).
- ✓ Coating (\*) : According to UNE-EN ISO 14713.
- ✓ Components: 3 years extensible to 5 years.

#### SPAIN

Travesía de la Industria Nº51  
Polígono de las Arobias  
33401 Avilés, Asturias  
Tel. +34 985 525 755  
Fax +34 985 525 130

#### MEXICO

Norte 45 No. 686  
Industrial Vallejo, Azcapotzalco  
México, D.F. CP 02300  
Tel. 01(55) 67 28 00 87



### GENERAL CHARACTERISTICS

Tracking	Zenital East-West $\pm 55^\circ / \pm 60^\circ$
Modules per row	Until 64 modules
Modules	60 cells/ 72 cells
Drive Type	Linear Actuator

### STRUCTURE

Material	Cold formed and Hot rolled steel with a yield strength greater or equal to 275 N/mm <sup>2</sup>
Finishing Treat	Hot Dip Galvanized according to UNE EN ISO 1461 or ZM (Zinc-Magnesium) according to UNE EN 10346
Foundations	Driven Pillars or Concrete Foundation
Wind Alarm	Winds higher than 20 m/s
Maximum Wind	Tailored to local Codes or specific client conditions up
Maximum Slope N-S	10%
Maximum Slope E-W	Any slope

### CONTROL SYSTEM

Tracking Algorithm	NOAA Astronomic Algorithm
Tracking Mode	Multitracking
Data Feed	Ethernet / Wireless (UNB)
Nominal Voltage	Self-Powered / 24VDC
Motor Power	From 90 W to 150 KW
Positioning Alarm	Configurable, depending on client request

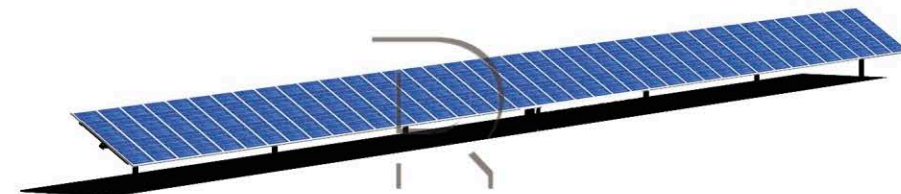
#### (\*) Standard Coating Warranty

Enviroment	Warranty
C2 Exposed rural inland	50 years
C3 Urban inland or mild coastal	25 yeras
C4 Industrial inland or urban coastal	10 years
C5 Industrial with high humidity or high salinity coastal	5 yeras

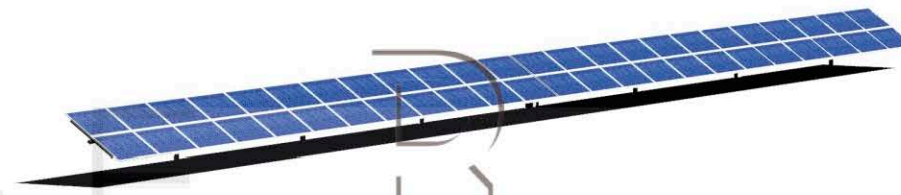
Service life is guaranteed maintaining enviromental conditions without changes.

### CONFIGURATIONS

TRM / 1PV One panel portrait.



TRM / 2PH Two panel landscape.



TRM / 3PH Three panel landscape.



Electromechanical drive using linear actuator

#### SPAIN

Travesía de la Industria Nº51  
Polígono de las Arobas  
33401 Avilés, Asturias  
Tel. +34 985 525 755  
Fax +34 985 525 130

#### MEXICO

Norte 45 No. 686  
Industrial Vallejo, Azcapotzalco  
México, D.F. CP 02300  
Tel. 01(55) 67 28 00 87

[www.asturmadienergy.com](http://www.asturmadienergy.com)

[info@asturmadienergy.com](mailto:info@asturmadienergy.com)

+34 985 525 755